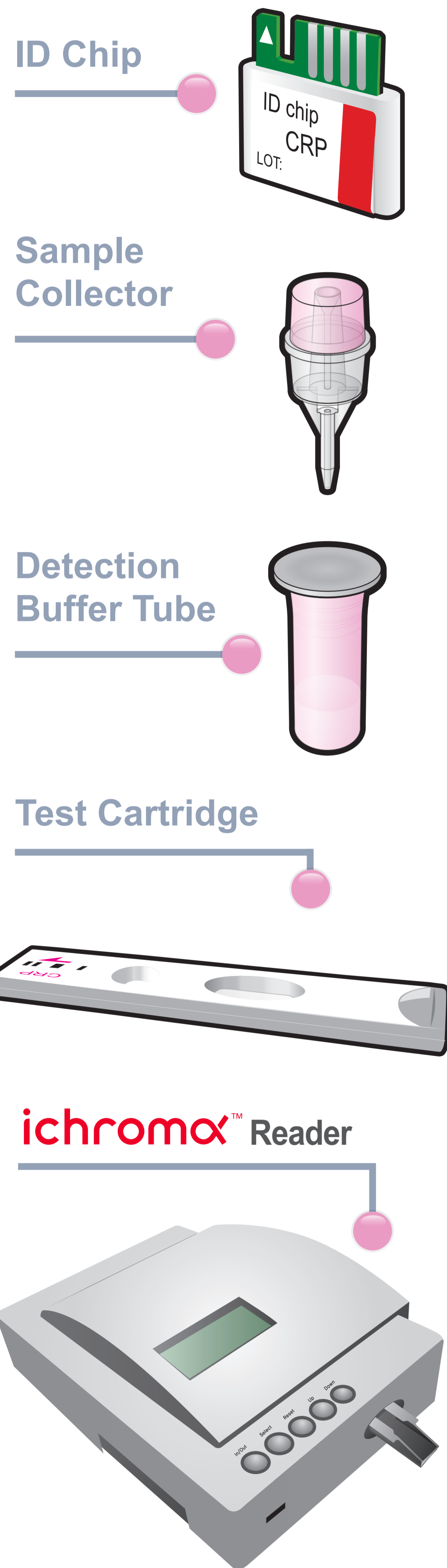


ichromax™ CRP

Test Setup

Test Components

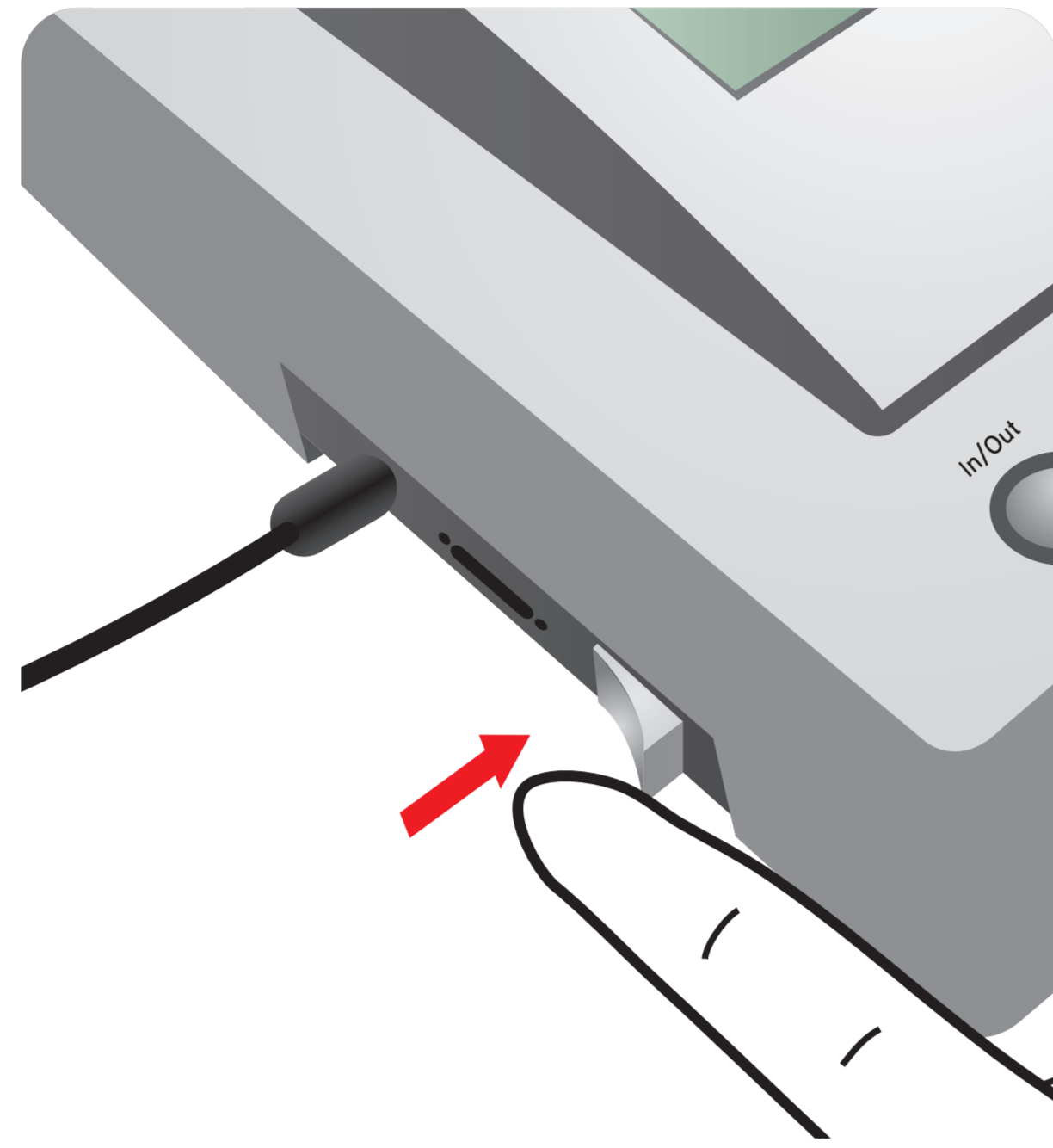


Important

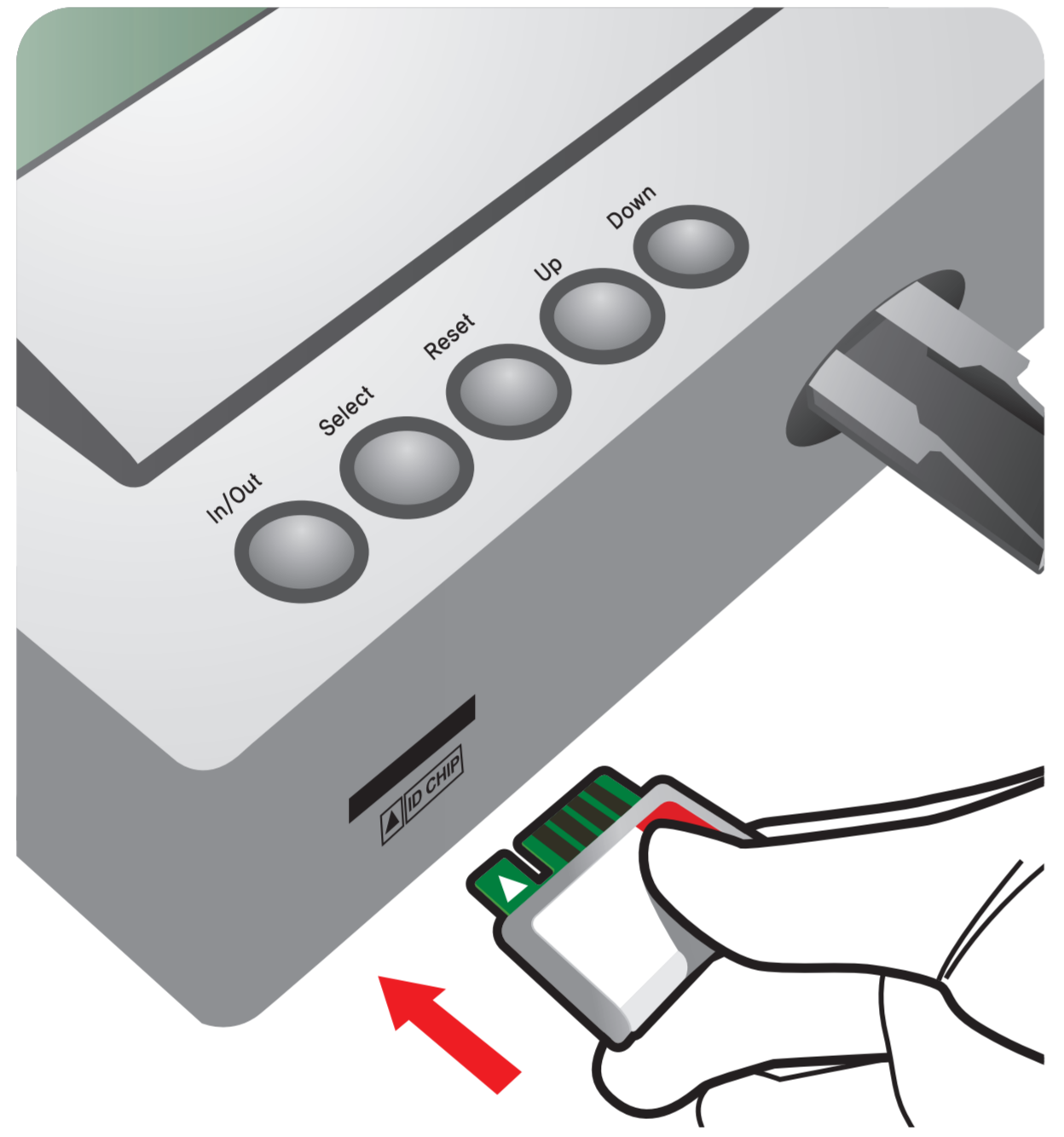
Allow 'Detection Buffer Tube' to attain room temperature at least for 30 minutes before performing the test

Make sure that lot number of the 'ID Chip' is exactly same as the lot number of 'Test Cartridge' and Detection Buffer Tube'

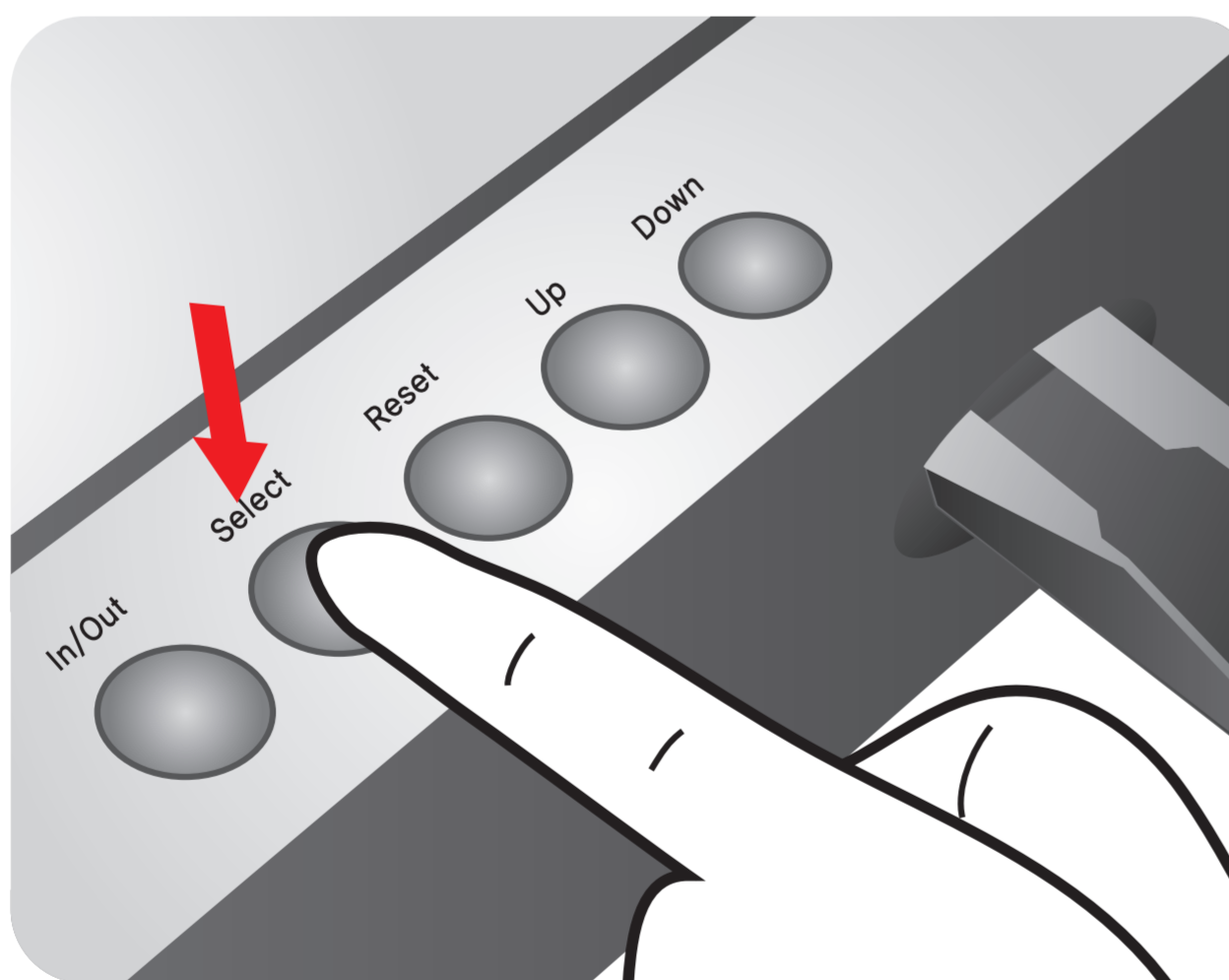
1 Turn the power switch 'On'



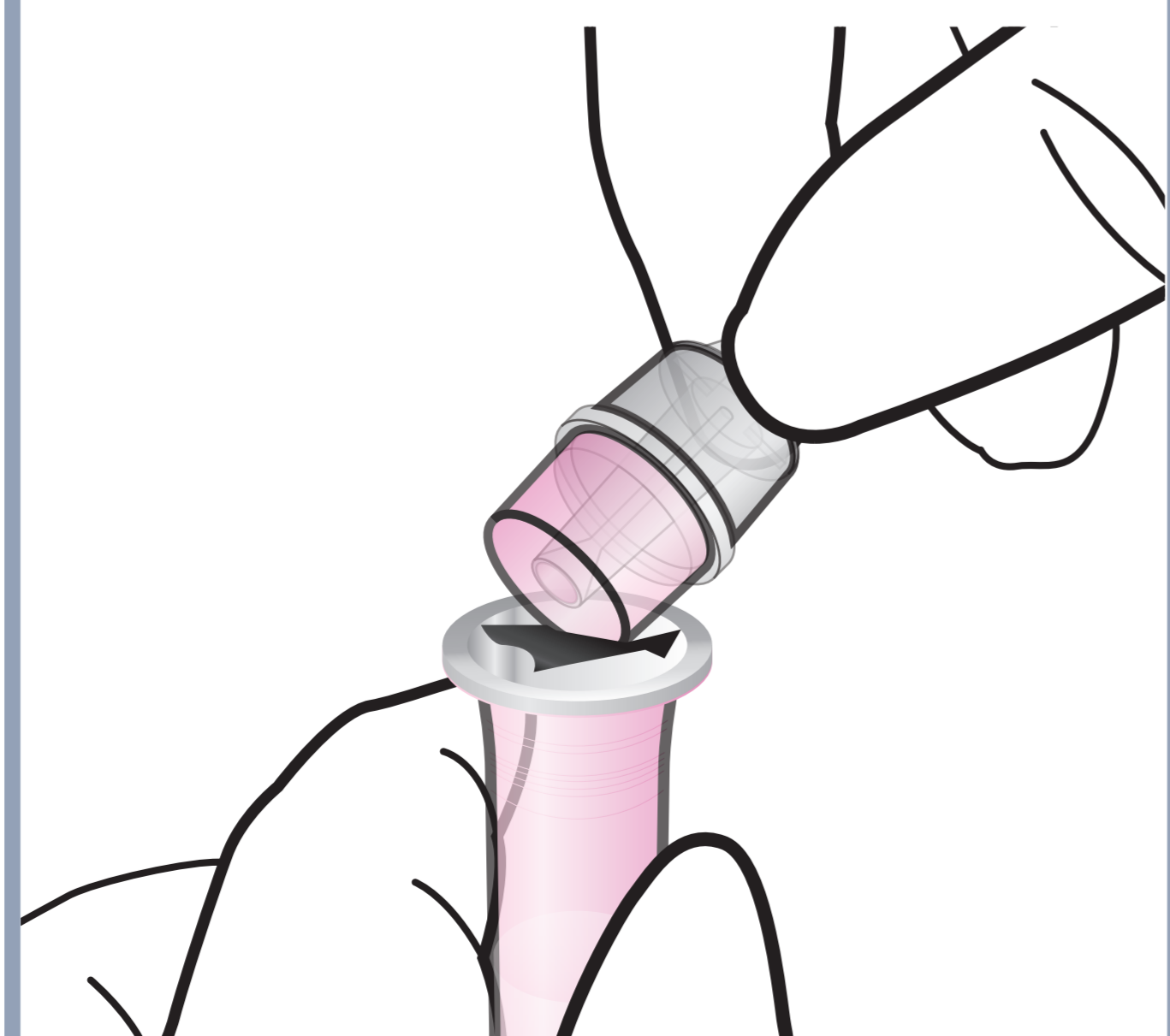
2 Insert ID Chip



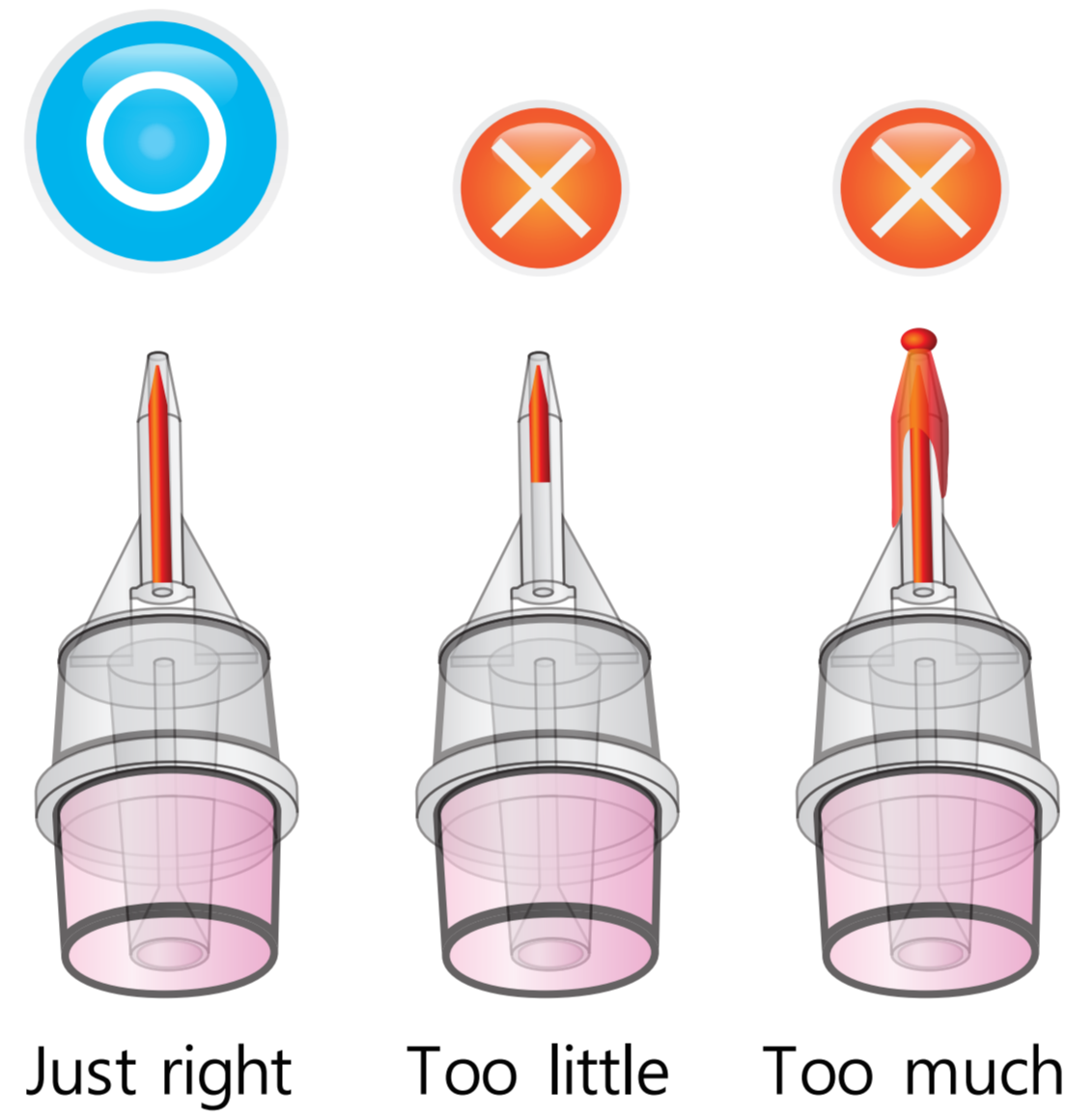
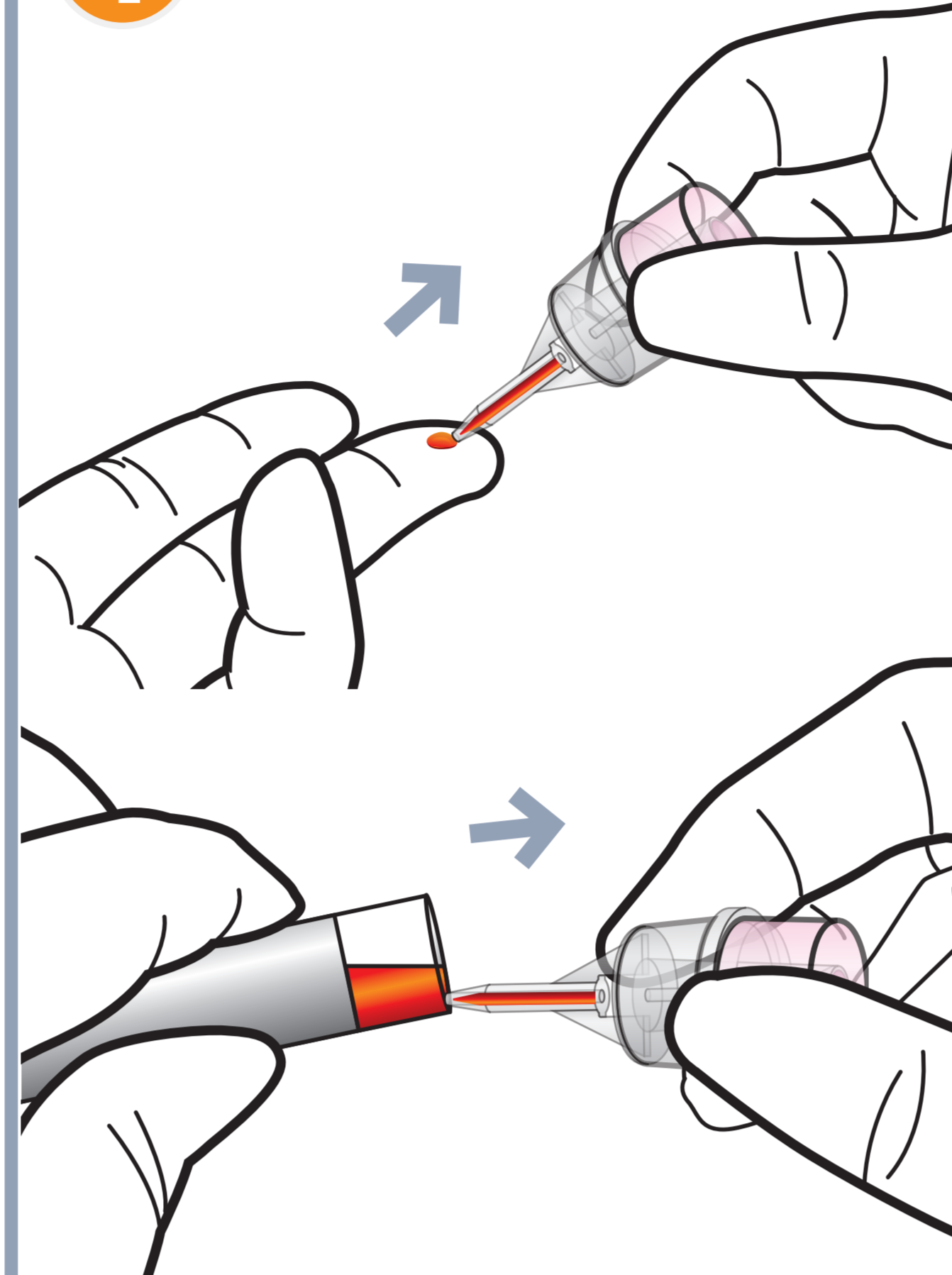
3 Press 'Select'



4 Make a Puncture

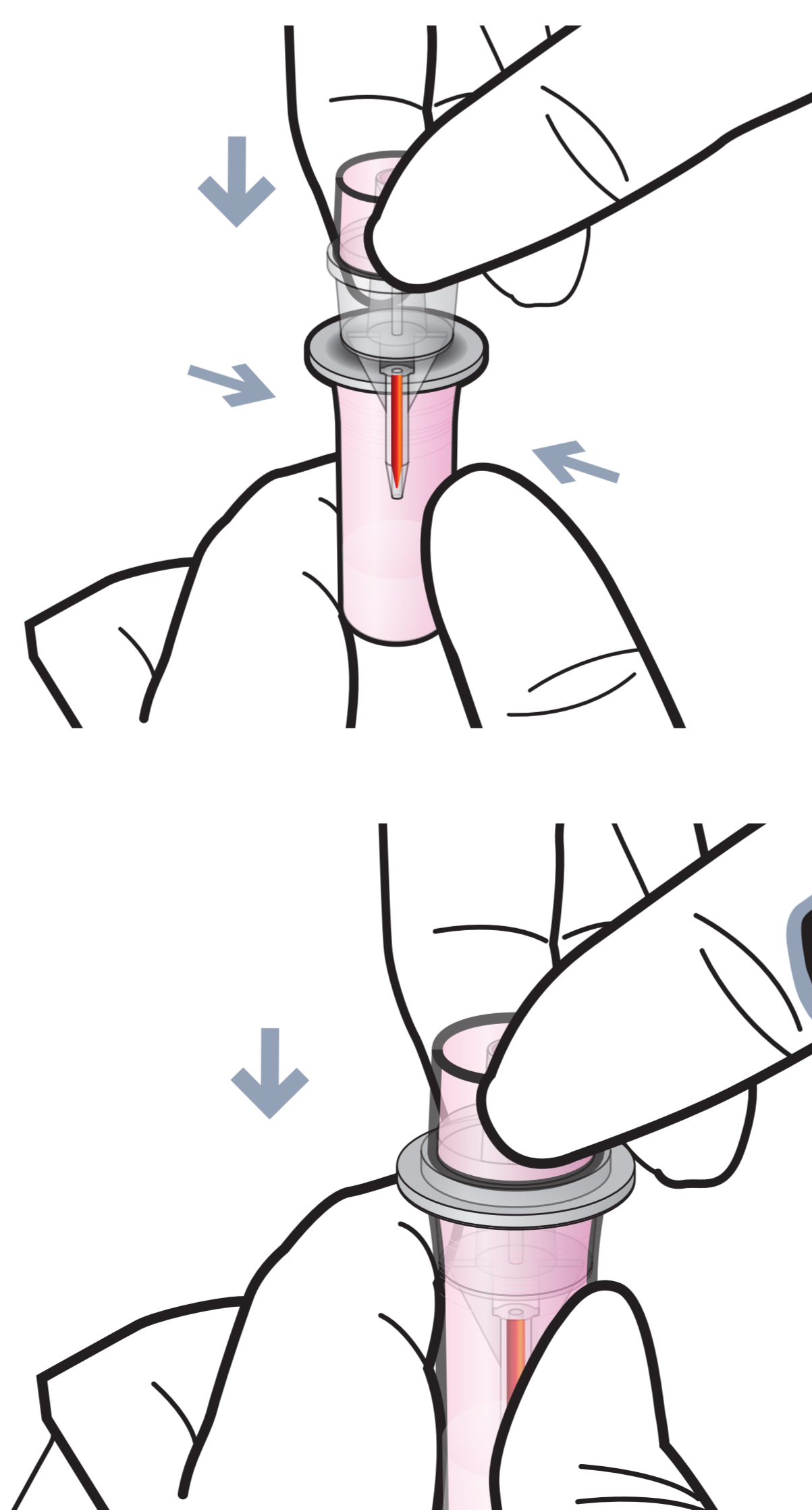


1 Draw whole blood

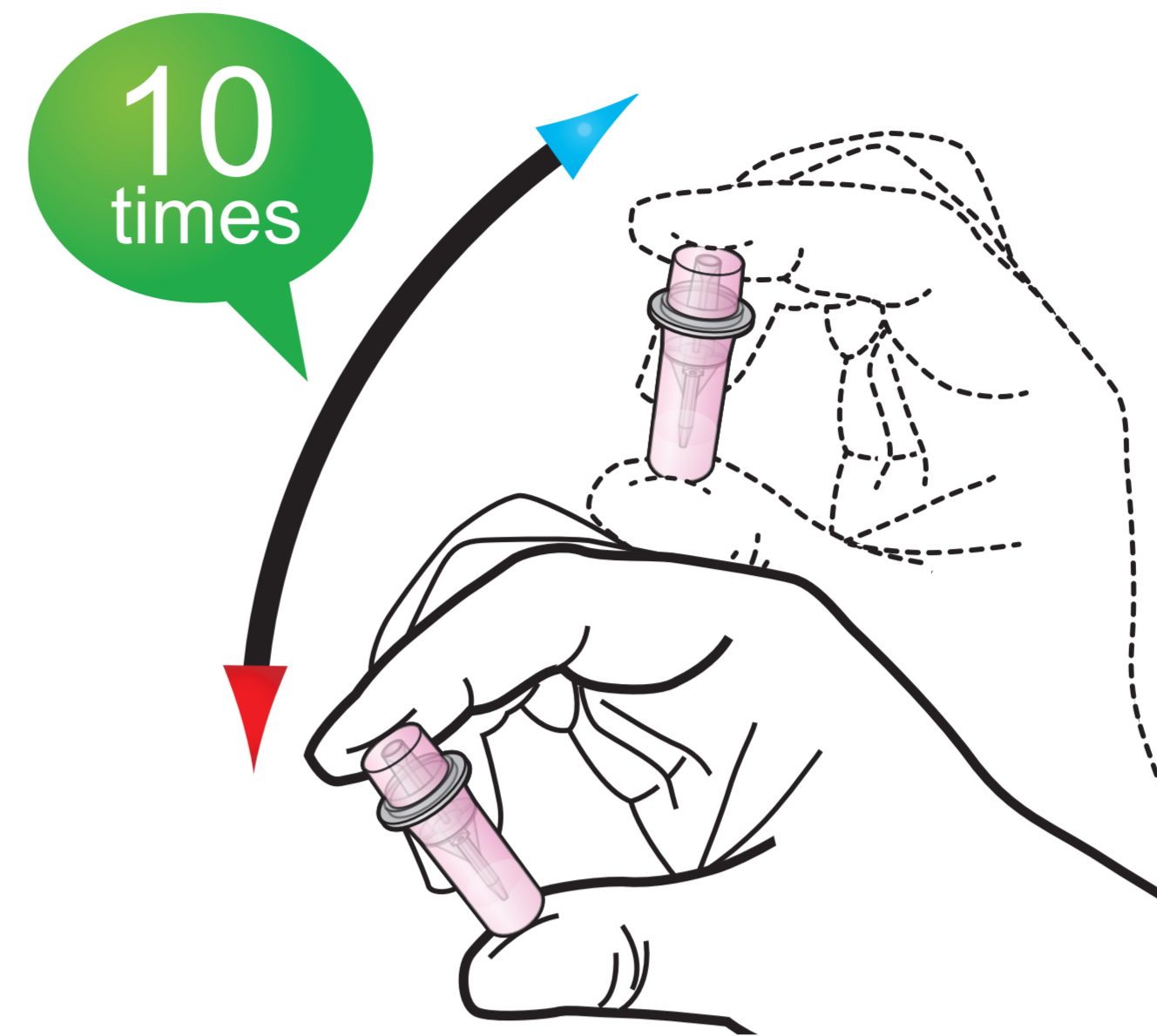


Add more blood Wipe away excess

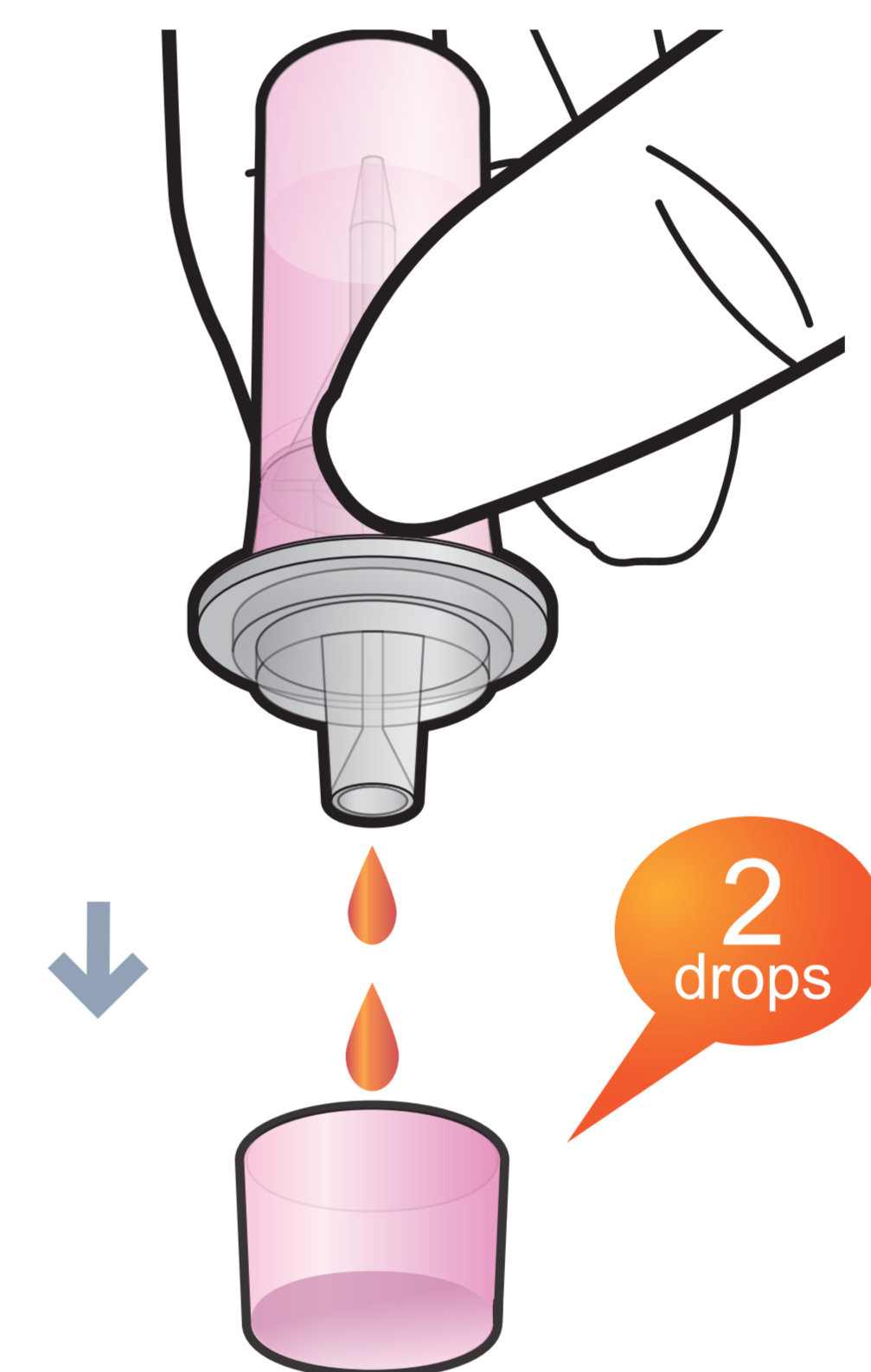
2 Assemble the sample collector with detection buffer tube



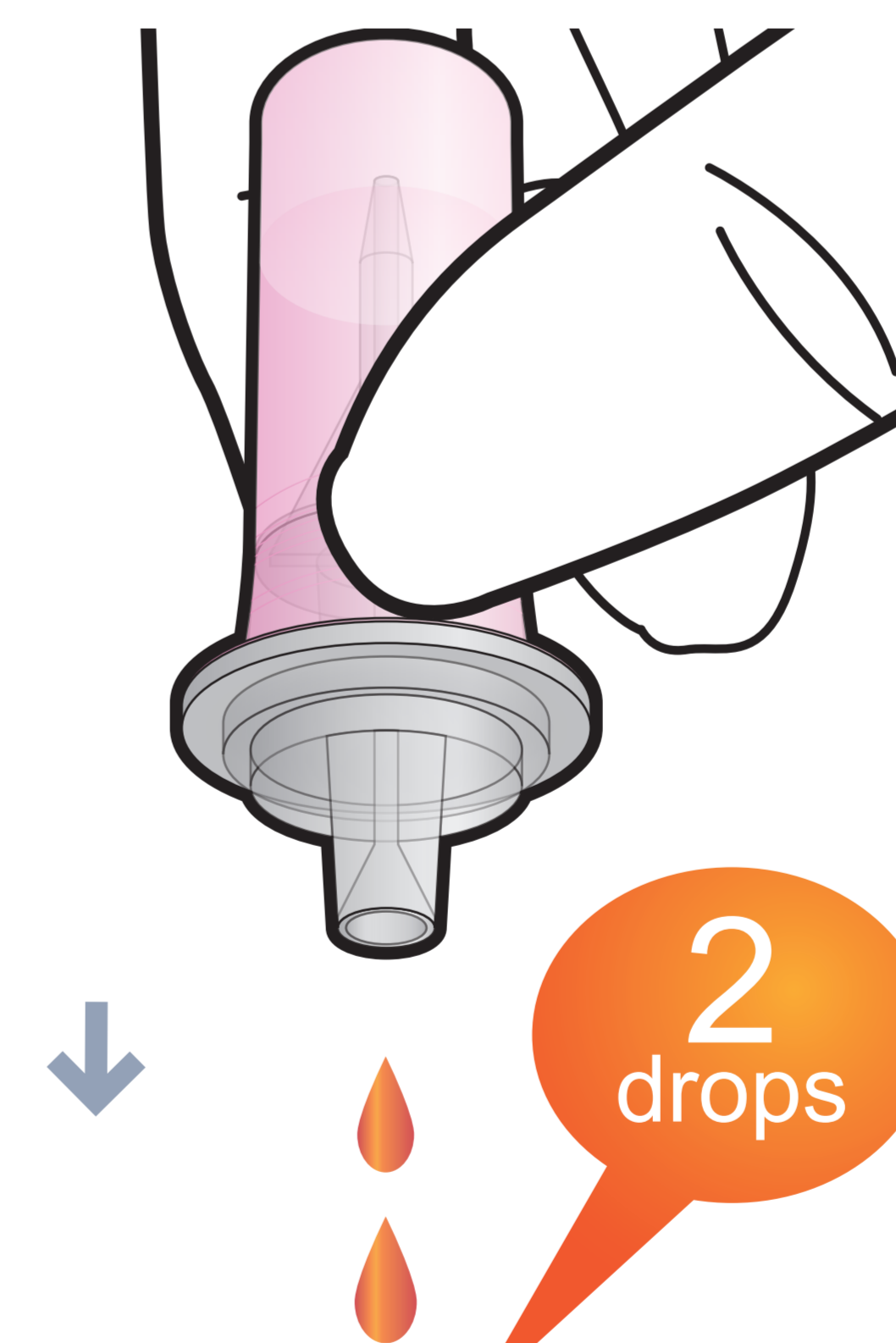
3 Shake the tube



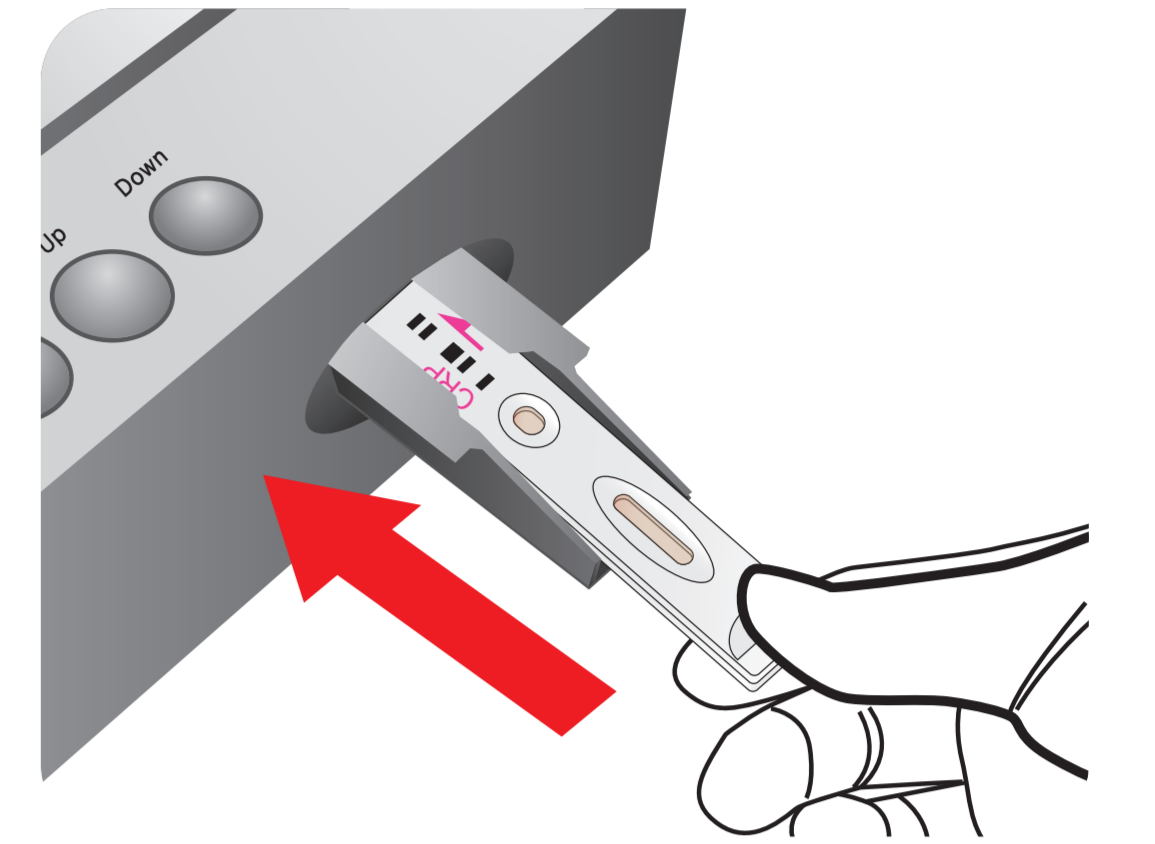
4 Discard two drops



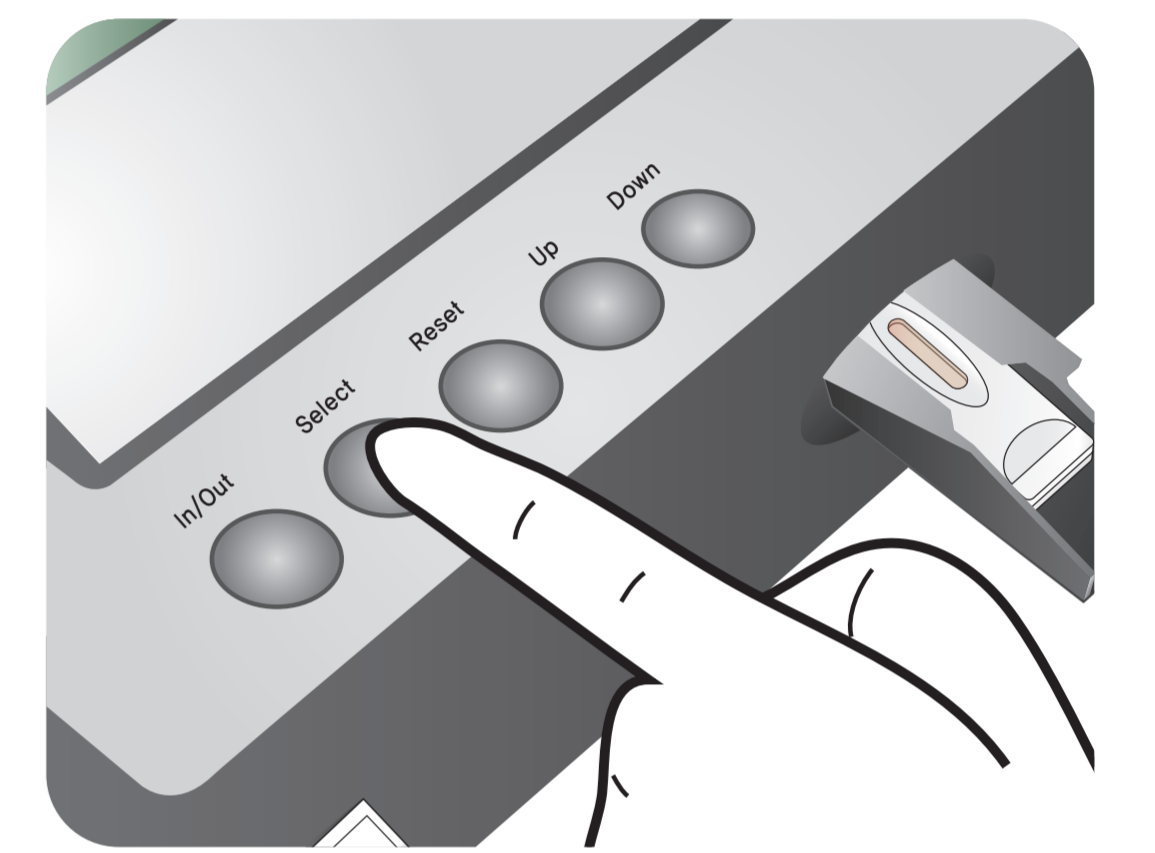
5 Load the sample mixture



6 Insert the test cartridge



7 Press 'Select'



3 mins

After 3 minutes

8 Read the test result

